

Help East Tennessee Children's Hospital Create the "Big Picture"

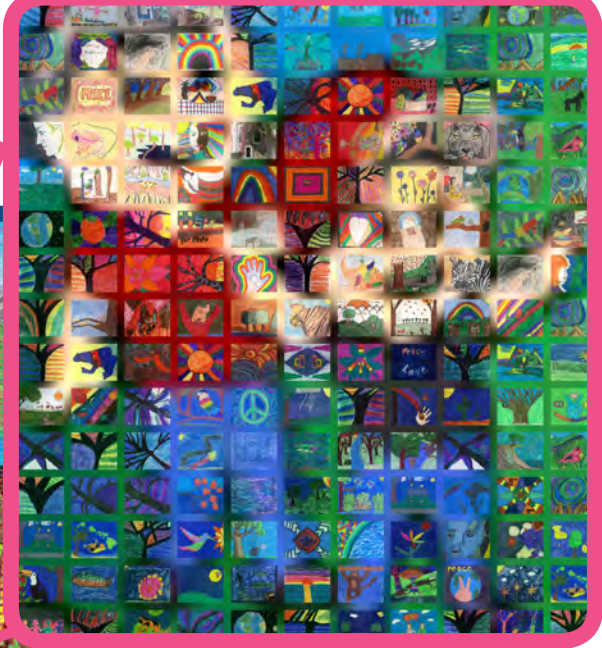


Your students are invited to participate in the East Tennessee Children's Hospital Community Mosaic Mural Project. We've partnered with Project S.N.A.P. to create a mosaic mural that will celebrate the opening of the hospital's new state-of-the-art 245,000 square-foot expansion opening in 2017.

Your students' artworks will join thousands of pieces created by our patients, community members and supporters. Their artworks will help create a giant, 12' x 15' mosaic mural. Once complete, the mosaic mural will greet patients and their families as they enter the hospital.

When the mosaic mural is revealed in early 2017, your students will be able to find their artworks and the exact locations of their artworks in the mosaic mural by either visiting the hospital or going to the Project S.N.A.P. Online Art Museum!

Visit www.projectsnap.org/etch
for more information.



This mosaic mural (left) is a sample of the mosaic mural that will be created from the artworks that your students submit. The pink box indicates the section that has been enlarged (above).

Artwork Creation Guidelines

1. Create a colorful artwork with the theme of “**Piecing Together a Healthy Tomorrow**”. You can consider some of the keywords below when thinking about what to include in your artwork:

- Compassion
- Hope
- Family
- Care
- Courage
- Children
- Community
- Miracle
- Love
- Healing
- Laughter
- Growth
- Faith
- Doctors
- Nurses

PLEASE USE MARKERS OR COLORED PENCIL ONLY!

Artworks created with chalk, pastel, glue, glitter, or other materials that create texture will not be accepted. All images must be dry and flat before submission so they can be easily scanned

2. All artworks should be original work relating to the project theme. Feel free to choose a word or phrase from the list above (or one of your own) to include in your artwork. **Please fill the entire page with color and avoid large amounts of white space.** All artworks will be reviewed for language and content.
3. Artwork must be created on the blank side of the **Artwork Entry Form** in **LANDSCAPE ORIENTATION** (11” x 8.5”). Please do not utilize any other kind of paper. Contact the Project S.N.A.P. team for additional **Artwork Entry Forms**.
4. Students should write an **Artist’s Statement** reflecting on the message, theme, and content of what they created. Write the **Artist’s Statement** in pen/pencil on the lines on the back of the **Artwork Entry Form**.

NOTE: Please **DO NOT** include the following in the artwork:

- **Student Names** (please ask students to put their name on the back and **NOT ON THE FRONT** of artwork)
- **Paintings/photographs of people, copyrighted material, or inappropriate language/subject matter.**

SUBMISSION GUIDELINES

1. Send home the **Parent Flyer** to be completed, signed and returned to the school.
2. Make sure all of the information on the **Artwork Entry Form** is completed for each artwork.
3. Include a signed **Parent Flyer** for every artwork if possible. **THIS IS NOT REQUIRED** for participation.
4. All students should visit <http://www.projectsnap.org/register> and use the secure “Online Submission System” to log artwork with:
 - Student First Name
 - Student Last Name
 - Grade
 - Artist’s Statement
5. Ship artworks in an envelope or in a box using **USPS Priority Mail**, **FedEx Ground** or **UPS Ground** to: Project S.N.A.P. , 6689 Orchard Lake Road, Suite 135, West Bloomfield, MI 48322
**Please obtain a tracking number and email it to info@projectsnap.org.*

DEADLINE: May 8, 2015

For questions or information, email info@projectsnap.org or call (248) 850-2202.



PROJECT
S.N.A.P.



EAST TENNESSEE
Children's
Hospital

NOTE: Original Artwork submitted to Project S.N.A.P. cannot be returned. All images will be accessible to students in the Project S.N.A.P. Online Art Museum after the mosaic mural is installed.

Help East Tennessee Children's Hospital Create the "Big Picture"



East Tennessee Children's Hospital has partnered with Project S.N.A.P. to create a giant 12'x15' mosaic mural to celebrate the opening of the hospital's new state-of-the-art 245,000 square-foot expansion opening in 2017. Your student's artwork will join thousands of other artworks made by patients, community members and hospital supporters to help create the mosaic mural.

Once complete, the mosaic mural will greet patients and their families as they enter the hospital and your student will be able to see where their artwork fits into the "big picture" in the Project S.N.A.P. Online Art Museum. For more information visit www.projectsnap.org/etch.



FIND YOUR STUDENT'S ARTWORK AND FOLLOW PROGRESS OF THE MOSAIC!

The East Tennessee Children's Hospital Community Mosaic Mural will be unveiled in early 2017. To receive an email after the unveiling with information on how to find your student's artwork in the Project S.N.A.P. Online Art Museum and explore the interactive mosaic, please detach and return this form with your student including information below.

Student Name _____

Grade _____

Parent Email _____

Project S.N.A.P., a 501(c)3 charitable organization, reserves the right to select and use your students submitted artwork in any mural created for Project S.N.A.P. Mosaic Mural programs. In addition, Project S.N.A.P. has the right to change an image size or crop it, in order to make it suitable for use by Project S.N.A.P. The student grants to Project S.N.A.P. the right to use this submitted artwork, without limitation, for any purposes (including commercial applications) that would benefit Project S.N.A.P. ***If you do not want your student to participate, please call the school office.***